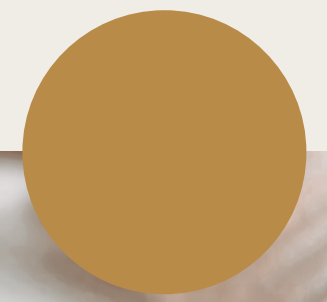
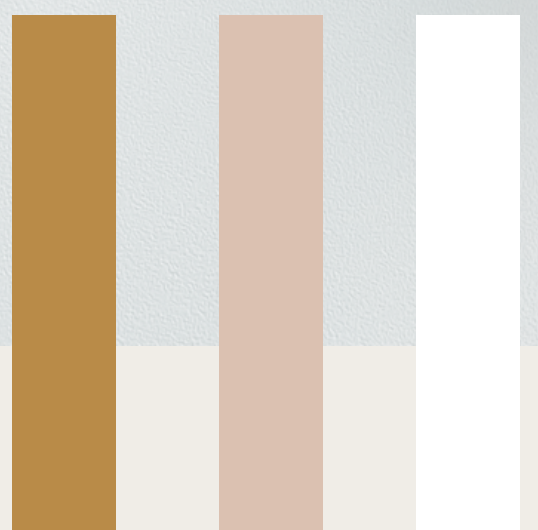


Boho Coasters

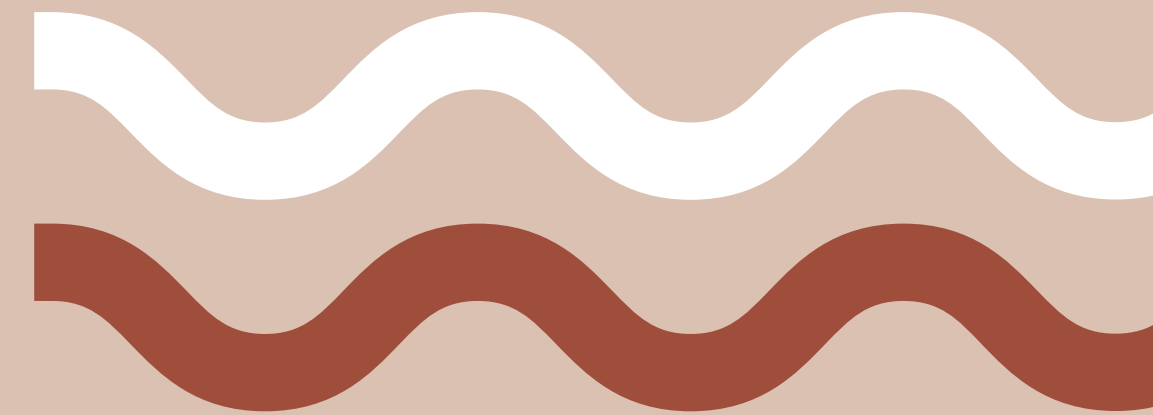


INTERIOR



Materials you'll be using

Raffia 10 gr
4mm crochet hook
Scissors
Stitch marker
Measuring tape



Stitches you'll need to know:

Single Crochet (Double Crochet UK)

Single crochet increase

Magic ring

Slip stitch

Abbreviations we'll be using:

SC - single crochet

INC - increase

SS - slip stitch

Boho Coaster Pattern

R1: 6SC stitches into a Magic Ring

Continue crocheting into a spiral

R2: SC INC all around, 12 stitches total

R3: (INC, 1SC) x 6 = 18 stitches

R4: 1SC, (1INC, 2SC)x 5, 1INC, 1 SC= 24 stitches

R5: (INC, 3SC) x 6 = 30 stitches

R6: 2 SC, (INC, 4SC) x 5, INC, 2SC = 36 stitches

R7: (INC, 5SC) x 6 = 42 stitches

R8: 4SC, (INC, 6SC) x 5, INC, 2SC = 48 stitches

R9: (INC, 7SC) x 6 = 54 stitches

Do 3 SS to finish off

Cut 54 pieces of raffia 7 cm long and attach them all around the last row by folding the piece into a half, using your hook pull it through the stitch, not all the way, only half. Take the loop you just formed and place it over the two ends, pull on the end to close the loop.

Separate the tails to make a fuller border look

Steam and iron the coaster to set everything in place

Cut the edges to make them even

Share your work with me!



If you liked this pattern please share it with me on social media, tag me on Instagram @yarns_design or on Facebook YarnS design. I'll be also sharing a video tutorial for this pattern on my YouTube Chanel yarnS design, so check on that too. Happy crocheting!

